

## **RHIC and AGS Users Executive Committee Monthly Meeting**

**Second Thursday of each month, Noon-2:00 PM (Eastern)  
Special Meeting time Today because we have a special guest**

**10/12/2017**

# Today's Guest



**Dr. Doon Gibbs, Director of Brookhaven National Laboratory**

<https://www.bnl.gov/about/org/gibbs.php>

- **Ph.D. from the University of Illinois (1982)**
- **Scientific career at BNL**
  - X Ray scattering studies of magnetic materials and surfaces
  - DOE Outstanding Accomplishment in Solid State Physics (1985)
  - A.H. Compton Award for pioneering work ... in X ray scattering (2003)
- **Management career at BNL**
  - Group Leader for X ray scattering
  - Associate and Deputy Chair of the Physics Department
  - Head of Condensed Matter Physics
  - Director of Center for Functional Nanomaterials
  - ALD for Basic Energy Sciences & Deputy Director for Science & Tech.
  - Laboratory Director and President of BSA (2013)
- **Scientific Programs and Facilities at BNL**
  - Designed and built the Center for Functional Nanomaterials
  - NSLS II, Computational Science Initiative, Discovery Park

# UEC Membership



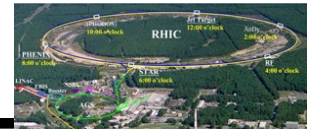
Name	Position	Term	Affiliation
<a href="#">Jim Thomas</a>	Chair	6/17 - 6/18	<a href="#">The Berkeley Lab</a>
<a href="#">Rosi Reed</a>	Chair Elect	6/17 - 6/18	<a href="#">Lehigh University</a>
<a href="#">Lijuan Ruan</a>	Past Chair	6/17 - 6/18	<a href="#">Brookhaven National Laboratory</a>
<a href="#">Megan Connors</a>	Member	6/16 - 6/19	<a href="#">Georgia State University</a>
<a href="#">Brett Fadem</a>	Member	6/16 - 6/19	<a href="#">Muhlenberg College</a>
<a href="#">Justin Frantz</a>	Member	6/17 - 6/20	<a href="#">Ohio University</a>
<a href="#">Tony Frawley</a>	Member	6/17 - 6/20	<a href="#">Florida State University</a>
<a href="#">Jacquelyn Noronha-Hostler</a>	Member	6/17 - 6/20	<a href="#">Rutgers University</a>
<a href="#">Claudia Ratti</a>	Member	6/16 - 6/19	<a href="#">University of Houston</a>
<a href="#">Sevil Salur</a>	Member	6/16 - 6/19	<a href="#">Rutgers University</a>
<a href="#">Bjoern Schenke</a>	Member	6/16 - 6/19	<a href="#">Brookhaven National Laboratory</a>
<a href="#">Bernd Surrow</a>	Member	6/15 - 6/18	<a href="#">Temple University</a>
<a href="#">Aihong Tang</a>	Member	6/16 - 6/19	<a href="#">Brookhaven National Laboratory</a>
<a href="#">Kenneth Barish</a>	Appointed Member	6/17 - 6/19	<a href="#">UC Riverside</a>
<a href="#">Gabor David</a>	Appointed Member	6/16 - 6/18	<a href="#">SUNY @ Stony Brook</a>
<a href="#">Peter Petreczky</a>	Appointed Member	6/16 - 6/18	<a href="#">Brookhaven National Laboratory</a>
<a href="#">Matthew Posik</a>	Appointed Member	6/16 - 6/18	<a href="#">Temple University</a>
<a href="#">Daniel Brandenburg</a>	Student/Post-doc Rep	6/17 - 6/18	<a href="#">Rice University</a>
<a href="#">Alexander Jentsch</a>	Student/Post-doc Rep	6/17 - 6/18	<a href="#">University of Texas</a>
<a href="#">Li Yi</a>	Student/Post-doc Rep	6/17 - 6/18	<a href="#">Yale University</a>
<a href="#">Doon Gibbs</a>	Ex-Officio Member		<a href="#">Brookhaven National Laboratory</a>
<a href="#">Hong Ma</a>	Ex-Officio Member		<a href="#">Brookhaven National Laboratory</a>
<a href="#">Berndt Mueller</a>	Ex-Officio Member		<a href="#">Brookhaven National Laboratory</a>
<a href="#">Thomas Roser</a>	Ex-Officio Member		<a href="#">Brookhaven National Laboratory</a>

# The Annual Users Meeting



- **Our single biggest activity – serious work to begin in January**
  - Workshops
  - Plenary sessions
  - Typically Tuesday – Friday, mid to late June
  - Chair of the Organizing Committee will be Prof. Rosi Reed
- **Save the Date**
  - Tell your Friends, tell our Competitors(!)
    - June 12 – 15, 2018
    - (Actually, it is very important that we advertise this date so that competing meetings don't accidentally overlap our dates. For example, the BNL Physics Department Colloquium committee, Quark Matter and the JLAB Users Meeting.)

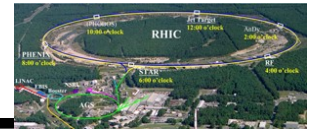
# Open Forums



- **We conduct an open forum twice a year: at the Fall DNP Meeting and at the Annual Users Meeting**
  - **The goal is to hear directly from Users regarding issues that affect User research & productivity while using BNL facilities**
- **The Fall DNP Meeting is held in October**
  - **We usually have a brief professional meeting and dinner/social in conjunction with the Open Forum**
  - **Rosi has all the details**
- **The Annual Users Meeting is held in June**



# Funding, Politics and Programmatics



- **We invented several new activities last year**
  - They have tremendous merit and I would like to propose that we pursue them again this year

## 1. Letter to Congress

- A letter to our congressional representatives recommending robust support for Science Funding
- Authors to be solicited at the AUM – the timing is perfect

Perhaps Justin + Volunteer can draft a template & report back in 2 months

## 2. Recommend a slate of Candidate for the APS/DNP Executive Committee

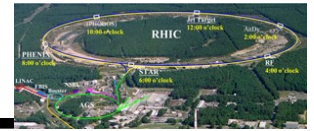
- Ask RHIC Users to send nominations to DNP Nominating Committee
- Slate of candidates to be selected by UEC, and signatures solicited at AUM. Again, the timing is perfect ... due by July 1<sup>st</sup>.

Two Volunteers (raise your hand) to evaluate past candidates and past winners to tell us what to look for in a candidate. See DNP newsletters. Report back to the UEC in 2 months time.



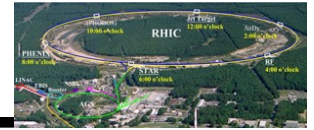


# Things to remember



- **UEC Monthly Meetings on the 2<sup>nd</sup> Thursday of each Month**
  - **October 12<sup>th</sup>**                      **Director Gibbs**
  - **November 9<sup>th</sup>**                      **Abhay Deshpande**
  - **December 14<sup>th</sup>**                      **Thomas Roser**
  - **January 11<sup>th</sup>**                      **Michael Thoennessen (APS, formerly MSU/FRIB)**
- **Primary Web address for the UEC** (it is a little slow, so be patient)
  - <http://www.rhicuec.org>
- **Communication with the UEC**
  - [rhic-uec-members@listservers.net](mailto:rhic-uec-members@listservers.net)
- **Communication with the UEC Leadership & Management Team**
  - **Jim Thomas**                      [jhthomas@lbl.gov](mailto:jhthomas@lbl.gov)                      ([portjeffny@gmail.com](mailto:portjeffny@gmail.com))
  - **Rosi Reed**                      [rosijreed@lehigh.edu](mailto:rosijreed@lehigh.edu)                      ([rosijreed@gmail.com](mailto:rosijreed@gmail.com))
  - **LiJuan Ruan**                      [ruan@bnl.gov](mailto:ruan@bnl.gov)                      ([ljruan@gmail.com](mailto:ljruan@gmail.com))
  - **Kelly Guiffreda**                      [guiffreda@bnl.gov](mailto:guiffreda@bnl.gov)
  - **Kathy Nasta**                      [nasta@bnl.gov](mailto:nasta@bnl.gov)

# Kelly and Kathy's Corner



- A brief pause to allow Kelly and Kathy to report on important news



## Backup Slides

# The people who really do the hard work ...



## Guest, User & Visitor Center Staff



**Kathleen Nasta**  
GUV Center Manager

Ext. 7114    Email



**Teri Lazar**  
GUV Center Specialist

Ext. 3333    Email



**Maureen McNeill-Shea**  
GUV Center Assistant

Ext. 3333    Email



**Angela Melocoton**  
GUV Center Supervisor

Ext. 5322    Email



**Linda Rundlett**  
GUV Center Specialist

Ext. 3333    Email



**Amanda Satterley**  
User Agreement Specialist

Ext. 5076    Email



**Kelly Guiffreda**  
RHIC & AGS User Admin

Ext. 5654    Email

↑  
The Boss's  
Boss

←  
The  
Boss